

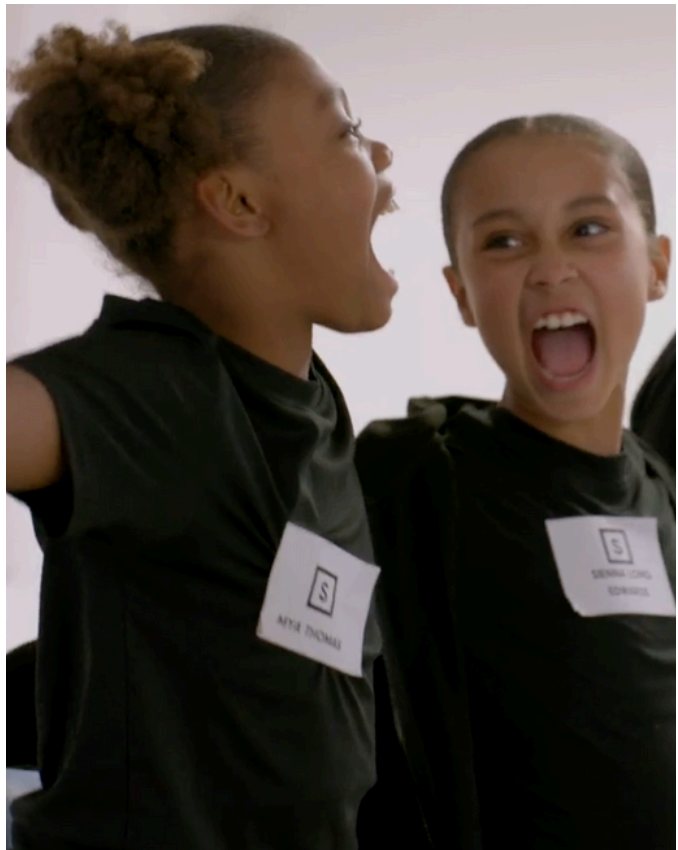
STAGEBOX



WELCOME TO STAGEBOX

Founded a decade ago, Stagebox is dedicated to helping young talent break into the industry and realise their dreams, regardless of background, location, or experience. We offer memberships for aspiring performers that provide comprehensive training, collaborative opportunities, and professional development tailored to accelerate each individual's journey in the performing arts.

Your child will have the opportunity to work with an extensive creative team, build lasting networks and ensure they are supported every step of the way. We look forward to welcoming you and your child as they embark on their industry journey with us.



ACTING MEMBERSHIP

The Stagebox Acting Membership offers dialect, acting for screen, improvisation and technique training. The faculty are responsible for carving out screen careers in the UK and US. For those pursuing an acting career this is essential.

Our industry curriculum and membership prepares young performers for professional success. Members participate in advanced screen training, dialect coaching and termly masterclasses to further their professional development and skill.

What's Included?

- Group acting for screen coaching
- Dialect coaching + acting coaching for 10 weeks every term during the school term
- 2 hours scheduled online every Wednesday
- 5pm - 7pm (Year 3 - Year 8+) or 7pm - 9pm (Year 8+ - Year 13)
- Access to termly masterclass meets in Central London
- Access to Stagebox Management Representation



NEXT LEVEL COACHING

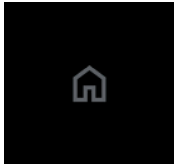
Our coaches and management are responsible for creating and curating the biggest success stories of the generation with breakthrough training & management to national and international acclaim. We've catapulted young artists from newcomer to lead talent with strong technical training, confidence building, networking and skill building. Our members benefit from learning dialect and accents so they are ready for any role, acting training to be able to tackle and handle complex script and character work and the industry understanding to have the confidence and ability to lead on a set. Our dialect studio is expertly led by a dialect team and our Head of Voice who has previously worked at companies including The Royal Shakespeare Company, Royal Central School of Speech and Drama, Nottingham Playhouse and Sky.

Previous masterclass guests and coaches include casting offices Nina Gold, Lucy Bevan, Theo Park, Kate Rhode James, Harkin and Toth, Danny Edwards, Andy Pryor, Lucinda Syson, Gill Charnock, Kate Bone, Faye Styring, Sophie Holland, Carolyn McLeod, Rob Kelly and more. Our members work every term with new casting teams and we are proud to introduce and train them with cutting edge associates, teams and mentors.

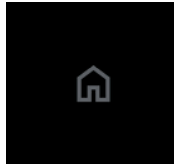
Our partner studio were also responsible for mentoring talent and previous alumni includes Penn Badgley, Emma Stone, Leonardo di Caprio, Hilary Duff, Tobey Maguire and Shailene Woodley.

TRAIN ONLINE: WEDNESDAYS

With membership capped, and age specific studios our members train in dedicated small group classes. All materials are relevant to age and ability. All training is online on a Wednesday evening



YEAR 3 - YEAR 8+
5pm – 7pm



YEAR 8+ - YEAR 13
7pm – 9pm

SCHEDULED DATES: ACTING

- All Memberships are rolling
- Dates are published in advance
- Training is online on a Wednesday evening
- Masterclass sessions are optional in a Central London location published in advance

TERM 1 (ONLINE)

TERM 2 (ONLINE)

TERM 3 (ONLINE)

MASTERCLASS (IN STUDIO)

September 17th	January 14th	May 6th
September 24th	January 21st	May 13th
October 1st	January 28th	May 20th
October 8th	February 4th	May 27th
October 15th	February 11th	June 3rd
October 22nd	March 4th	June 10th
November 12th	March 11th	June 17th
November 19th	March 18th	June 24th
November 26th	March 25th	July 1st
December 3rd	April 1st	July 8th

Saturday 13th September 2025
Saturday 10th January 2026
Saturday 9th May 2026
9:45am – 1:00pm Year 3 - Year 8+
1:45pm – 5:00pm Year 8+ - Year 13



STAGEBOX MANAGEMENT: LEADING TALENT REPRESENTATION FOR THEATRE, TELEVISION & FILM

Stagebox Management exclusively represents Stagebox members, nurturing talent for top film, television, theatre, musical theatre, and commercial projects. From emerging talent to established artists, our managers offer tailored guidance at each career stage. Our established talent division provides customised representation for experienced artists, while our U.S. partnerships open doors to exceptional opportunities.

Managers are assigned at every stage of the client journey from newcomer to established artists. We work with young talent from 8-21 years old supporting clients all the way from newcomer to adult. Our team of managers is led by our managers with years of experience in the UK and the US market.

Our Established Client List is the smallest management list for young talent age 8-21 years old looking to further their career following on from previous professional lead talent experience.

Our Emerging Client List is the pre-eminent management list for young talent age 8-18 years old looking to break into and establish themselves in the industry.

You can view more about our success stories across the entertainment sector at our website.

STAGEBOX FAQs

When does my child's membership commence?

You secure your place with an annual administration fee of £50 + vat. Your membership then begins on a rolling monthly basis from September (or if you join us mid year from either January 1st or May 1st in line with term start dates.) All memberships are on a rolling basis and full information is available at our terms and conditions.

What are your absence policies?

We strongly encourage full attendance but we understand where this is not possible due to personal or professional circumstances.

Acting: This is scheduled in advance. If you need to miss a Wednesday evening session or masterclass you can attend the next scheduled session and refer to materials available.

What is your notice period?

Most of our members stay for many years until graduation with memberships and management to suit every step of the journey. Downgrade information is available in the terms and conditions.

How are members streamed?

Acting: all training is streamed on age and ability. Please note, that all members are assessed continuously and we reserve the right to transition programmes if we feel the pace or intensity is not suitable for holistic development. We have a dedicated Head of Development who will always reach out with feedback where relevant.

Is there any funding available?

Limited bursary funding is available by emailing contact@stagebox.uk. Bursaries are available on a means tested, commitment and talent based assessment. You may be asked to re-apply for bursary funding each year but awards are on a rolling basis.

How do I get feedback on my child?








Once you're a member, you can book a telephone consultation to discuss your child in training and their progress and you also have a dedicated manager who will be able to discuss your child's professional development.

What happens to membership fees if my child books professional work?

If you book work through Stagebox Management that is 6 months or more in duration we will pause your membership.

STAGEBOX POLICIES | ACTING

Professional Etiquette

-  Our members' professional etiquette is at the cornerstone of Stagebox. Stagebox members are expected to follow professional standards and we do not tolerate bullying. Our community is kind, respectful and inclusive.
-  All jewellery including 'invisible' earrings, watches and nail varnish must be removed prior to entry into the studio.
-  Mobile phones should be switched off and remain in the member's bag throughout the day at Stagebox unless being used for recording under the supervision of creatives.
-  Hair should be immaculate at all times in the Stagebox studio. Long hair must be tied back.
-  Full uniform must be worn to gain entry to the Stagebox studio.
-  Social media activity is closely monitored by the Stagebox Team. Any material found on any social networking site that could contravene our Child Protection Policy or be viewed as damaging the safety of any Stagebox member or the reputation of Stagebox (including photographs/videos etc) will be dealt with seriously.
-  We reserve the right to film and post video and photographic content at Stagebox including for Instagram, Facebook, YouTube, TikTok, social media, production press, EPK and national press. This includes resharing of content. If your child cannot appear in media please notify us before sign up to contact@stagebox.uk

Timings and Absences

- Your child will be allocated a named studio in accordance with their age.
- Sign in for weekly training is 5 minutes before training using codes provided.
- It is vital that members arrive on time. No latecomers will be admitted. Members must arrive 5 minutes before sign in time.
- In the event of absence our host will note this and we will see you the following week.

Preparation and Training Groups

- Training groups are allocated by age and ability. Stagebox reserves the right to allocate studio groupings according to age.
- Preparation is key and we strongly encourage members to upload homework and tasks set by coaches termly.
- Year 3 - 8+ is our Junior Studio (5pm - 7pm) and Year 8+ - 13 is our Senior Studio (7pm - 9pm). We train our members in ages.
- Members should have access to material in advance of classes so they are fully prepared for each session.
- Members should also bring a notepad and pen to each session so they are able to take notes on any feedback and track their development throughout their training sessions.
- No photographs are permitted in the Stagebox Studio except those taken professionally.
- One Stagebox bag will be permitted per member for masterclasses. No additional bags or suitcases will be allowed into the studio.

Conduct

- Members and parents/guardians are expected to behave in a polite manner to staff and fellow members and be respectful and kind to each other.
- We do not condone negative or aggressive behaviour from parents or guardians toward staff or children in our care.
- In the event of a member being disruptive in class we reserve the right to ask them to sit out or to email home and advise in severe circumstances.
- For the protection of staff and children, parents and members will not contact Stagebox staff via personal communication either through social media, email or phone. All communication should be directed to contact@stagebox.uk.



Health and Welfare Policy

- Any pre-existing physical/mental illness or injury must be reported to Stagebox in advance of training. Please ensure you provide full medical disclosure at sign up which will be treated confidentially.
- If your child develops any physical or mental health that our team need to be aware of to care for them please email us to update us to contact@stagebox.uk
- We reserve the right to send members home due to infectious illness or if they report they are too unwell to be in training. Pastoral Care and Stagebox decisions on illness and fitness to train is final.
- If a member has been recently unwell with hospitalisation and/or severe illness please provide a doctor's letter in advance of training.
- Our hosts and centre leads are all licensed chaperones holding enhanced DBS checks with the local education authority. They also have extensive mental health and safeguarding training for paediatric care.
- Stagebox reserves the right to contact parents or guardians in the interests of the child if our centre leads feel a child is too unwell to continue with training.
- For health and safety reasons, whilst a child is in Stagebox care, it is the parent/ guardian's responsibility to ensure that you or another responsible adult (over the age of 18) is available to collect your child within no more than 1 hour in the event that your child is unwell.
- Parents must advise Stagebox in writing of any change to emergency contact numbers/telephone numbers/email addresses whilst a member is in Stagebox care. This is crucial so that we are able to contact you in any emergency.
- Stagebox reserves the right to refuse to allow your child to participate in any Stagebox related activity in the event that your child is deemed to be unwell or unfit to take part.
- Any illness/injury occurring whilst in Stagebox care must be reported to the Stagebox centre lead
- immediately at the time so they can ensure health and safety. If unwell or injured, it is the member's responsibility to seek help from pastoral care lead or staff.
- Stagebox reserves the right to call 999 in the event of an emergency whilst members are in Stagebox care.

Sign In/Sign Out Policy (Masterclasses)

- Members of UK high school (Year 3 to Year 11) must be dropped off and signed in by an adult over the age of 18 to be formally signed into the care of Stagebox staff.
- It is the responsibility of the parent/guardian to ensure that the Stagebox team are aware of any child protection concerns, requirements or court orders regarding their child. All disclosures are confidential and allow the team to appropriately care for and protect your child and others.
- Members of UK high school age (Year 12 and Year 13) may sign themselves in and out.
- If a member has not been collected within 20 minutes of sign out time and there has been no contact from the child's primary contact, the Stagebox team will attempt to contact the member's secondary contact to arrange for them to be collected. If a member has not been collected within an hour of sign out time, the Stagebox team will revert to our child protection policy to ensure the safety of the member and will notify the relevant authorities to seek further guidance.