

STAGEBOX



WELCOME TO STAGEBOX

Founded a decade ago, Stagebox is dedicated to helping young talent break into the industry and realise their dreams, regardless of background, location, or experience. We offer memberships for aspiring performers that provide comprehensive training, collaborative opportunities, and professional development tailored to accelerate each individual's journey in the performing arts.

Your child will have the opportunity to work with an extensive creative team, build lasting networks and ensure they are supported every step of the way. We look forward to welcoming you and your child as they embark on their industry journey with us.



MUSICAL THEATRE MEMBERSHIP

Our Musical Theatre Membership is our flagship programme, widely recognised as an industry accelerator and leader. It serves as a dynamic training and networking ground that replicates the professional rehearsal environment, building the stamina, skills, and knowledge required for a career in musical theatre. Members are streamed according to age enabling them to train at a professional company standard.

This membership includes four weeks of intensive training during the school holidays, led by our Resident Team and top industry associates. Training is modelled on the professional rehearsal room, with sessions led daily by experienced musical directors, choreographers, and creatives from the industry.

Our rigorous curriculum and membership prepares young performers for professional success. Members participate in advanced, high-intensity programmes, including bootcamps, industry workshops, and live company projects, all culminating in a unique on-set filming experience with a live studio audience.



COMPANY PROJECT LIVE: TALENT WITH A PLATFORM

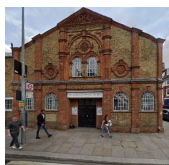
Stagebox offers members the unique opportunity to work on set with major production studios, gaining practical experience in a professional environment. Our recent production, created by Founders Emily and L-J Keston (Children's Casting Directors at Keston & Keston), Director of Film Joe Ransom (Industry Film Cinematographer) and Creative Director Jo Goodwin (Industry Choreographer) featured original music by Netflix studio writers and was performed live in front of an audience of industry professionals, friends, and family.

Stagebox is committed to providing real-world learning opportunities for all members, irrespective of background or prior experience. Our creative team includes 60 industry professionals each year, surpassing the industry immersion and training offered at many higher education establishments.

TRAIN ANYWHERE

With membership capped, Stagebox offers flexibility so members can train throughout the year at any of our state-of-the-art centres:

- Our centres host training sessions during school holidays throughout the year.



LONDON

Duboisson Studios,
W12 7BF



LEEDS

Playhouse Square, Leeds City
College, LS2 7BS



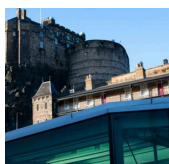
BIRMINGHAM

Elmhurst Ballet
School, B5 7UH



MANCHESTER

Shockout Arts,
M16 0PU



EDINBURGH

Dancebase,
EH1 2JU

SCHEDULED DATES: MUSICAL THEATRE

- All Memberships are rolling and dates are updated in advance

	WEEK 1 (IN STUDIO)	WEEK 2 (IN STUDIO)	WEEK 3 (IN STUDIO)	WEEK 4 (IN STUDIO)
LONDON	Monday 28th to Thursday 31st October 2024	Monday 17th to Thursday 20th February 2025	Monday 28th July to Thursday 31st July 2025	Monday 4th August to Thursday 7th August 2025
LEEDS	Monday 28th to Thursday 31st October 2024	Monday 17th to Thursday 20th February 2025	Monday 28th July to Thursday 31st July 2025	Monday 4th August to Thursday 7th August 2025
MANCHESTER	Monday 28th to Thursday 31st October 2024	Monday 17th to Thursday 20th February 2025	Monday 28th July to Thursday 31st July 2025	Monday 4th August to Thursday 7th August 2025
BIRMINGHAM	Monday 28th to Thursday 31st October 2024	Monday 17th to Thursday 20th February 2025	Monday 28th July to Thursday 31st July 2025	Monday 4th August to Thursday 7th August 2025
EDINBURGH	Monday 14th to Thursday 17th October 2024	Monday 10th to Thursday 13th February 2025	Monday 30th June to Thursday 3rd July 2025	Monday 7th July to Thursday 10th July 2025



STAGEBOX MANAGEMENT: LEADING TALENT REPRESENTATION FOR THEATRE, TELEVISION & FILM

Stagebox Management exclusively represents Stagebox members, nurturing talent for top film, television, theatre, musical theatre, and commercial projects. From emerging talent to established artists, our managers offer tailored guidance at each career stage. Our established talent division provides customised representation for experienced artists, while our U.S. partnerships open doors to exceptional opportunities.

Managers are assigned at every stage of the client journey from newcomer to established artists. We work with young talent from 8-21 years old supporting clients all the way from newcomer to adult. Our team of managers is led by agents with experience in the UK and the US market.

Our Established Client List is the smallest management list for young talent age 8-21 years old looking to further their career following on from previous professional lead talent experience.

Our Emerging Client List is the pre-eminent management list for young talent age 8-18 years old looking to break into and establish themselves in the industry.

You can view more about our success stories across the entertainment sector at our website.

STAGEBOX FAQs

When does my child's membership commence?

You secure your place with an annual administration fee of £50 + vat. Your membership then begins on a rolling monthly basis from September (or if you join us mid year from either January 1st or April 1st in line with term start dates. All memberships are on a rolling basis and full information is available at our terms and conditions.

What are your absence policies?

We strongly encourage full attendance but we understand where this is not possible due to personal or professional circumstances.

Musical Theatre: This is scheduled in advance. You can attend any training centre as scheduled within your dates list. You can turn up to the centre of your choice for any 4 day block (please note you must attend the same week 3 and 4 location due to Company Project rehearsals) for each week. No absence is permitted once the week commences unless it is for an audition, rehearsal or production secured via Stagebox Management.

What is your notice period?

Most of our members stay for many years until graduation with memberships and management to suit every step of the journey. Downgrade information is available in the terms and conditions.

How are members streamed?

Musical Theatre: all training is streamed on age and ability

Is there any funding available?

Limited bursary funding is available by emailing contact@stagebox.uk. Bursaries are available on a means tested, commitment and talent based assessment. You must re-apply for bursary funding each year.

How do I get feedback on my child?








Once you're a member, you can book a telephone consultation to discuss your child in training and their progress and you also have a dedicated manager who will be able to discuss your child's professional development.

What happens to membership fees if my child books professional work?

If you book work through Stagebox Management that is 6 months or more in duration we will pause your membership.

STAGEBOX POLICIES | MUSICAL THEATRE

Professional Etiquette

-  Our members' professional etiquette is at the cornerstone of Stagebox. Stagebox members are expected to follow professional standards and we do not tolerate bullying. Our community is kind, respectful and inclusive.
-  All jewellery including 'invisible' earrings, watches and nail varnish must be removed prior to entry into the studio.
-  Mobile phones should be switched off and remain in the member's bag throughout the day at Stagebox unless being used for recording under the supervision of creatives.
-  Hair should be immaculate at all times in the Stagebox studio. Long hair must be tied back.
-  Full uniform must be worn to gain entry to the Stagebox studio.
-  Social media activity is closely monitored by the Stagebox Team. Any material found on any social networking site that could contravene our Child Protection Policy or be viewed as damaging the safety of any Stagebox member or the reputation of Stagebox (including photographs/videos etc) will be dealt with seriously.
-  We reserve the right to film and post video and photographic content at Stagebox including for Instagram, Facebook, YouTube, TikTok, social media, production press, EPK and national press. This includes resharing of content. If your child cannot appear in media please notify us before sign up to contact@stagebox.uk

STAGEBOX POLICIES | MUSICAL THEATRE

Timings and Absences

- All days run from 10am - 5pm inclusive.
- Sign in is at 9:40am and sign out is at 5pm prompt.
- It is vital that members arrive on time. No latecomers will be admitted. Members must arrive 15 minutes before sign in/sign out time. In exceptional circumstances please contact the team via email to let them know your estimated arrival time.
- Children must attend training weeks in full (e.g. all 4 days). We reserve the right to deny entry to rehearse or perform in Stagebox productions and/or projects where a child has been absent from training or rehearsals due to non-attendance or illness.

Preparation and Training Groups

- Training groups are allocated by age and ability. Stagebox reserves the right to allocate studio groupings according to age.
- Year 3 - 8 is our Junior Studio and Year 9 - 13 is our Senior Studio. We train our members in age and mixed age setting.
- Members should have access to material in advance of classes so they are fully prepared for each session.
- Members should also bring a notepad and pen to each session so they are able to take notes on any feedback and track their development throughout their training sessions.
- No photographs are permitted in the Stagebox Studio except those taken professionally.
- One Stagebox bag will be permitted per member. No additional bags or suitcases will be allowed into the studio.

Conduct

- Members and parents/guardians are expected to behave in a polite manner to staff and fellow members and be respectful and kind to each other.
- We do not condone negative or aggressive behaviour from parents or guardians toward staff or children in our care.
- In the event of a member being disruptive in class we reserve the right to ask them to sit out or to send them home in severe circumstances.
- For the protection of staff and children, parents and members will not contact Stagebox staff via personal communication either through social media, email or phone. All communication should be directed to contact@stagebox.uk.

Health and Welfare Policy

- Any pre-existing physical/mental illness or injury must be reported to Stagebox in advance of training. Please ensure you provide full medical disclosure at sign up which will be treated confidentially.
- If your child develops any physical or mental health that our team need to be aware of to care for them please email us to update us to contact@stagebox.uk
- We reserve the right to send members home due to infectious illness or if they report they are too unwell to be in training. Pastoral Care and Stagebox decisions on illness and fitness to train is final.
- If a member has been recently unwell with hospitalisation and/or severe illness please provide a doctor's letter in advance of training.
- Where members miss any training due to illness (and this is not disclosed at sign up or provided under a care plan), we will not be able to re-admit them for the remainder of the week.
- Members must be available for all training days in full in order to attend the training week due to the intensive nature of training, health and safety and risk assessments. This includes production dates (The Company Project Live).
- Our centre leads are all licensed chaperones holding enhanced DBS checks with the local education authority. They also have extensive mental health and safeguarding training for paediatric care.
- Stagebox reserves the right to contact parents or guardians in the interests of the child if our centre leads feel a child is too unwell to continue with training.
- For health and safety reasons, whilst a child is in Stagebox care, it is the parent/ guardian's responsibility to ensure that you or another responsible adult (over the age of 18) is available to collect your child within no more than 1 hour in the event that your child is unwell.
- Parents must advise Stagebox in writing of any change to emergency contact numbers/telephone numbers/email addresses whilst a member is in Stagebox care. This is crucial so that we are able to contact you in any emergency.
- Stagebox reserves the right to refuse to allow your child to participate in any Stagebox related activity in the event that your child is deemed to be unwell or unfit to take part.
- Any illness/injury occurring whilst in Stagebox care must be reported to the Stagebox centre lead
- immediately at the time so they can ensure health and safety. If unwell or injured, it is the member's responsibility to seek help from pastoral care lead or staff.
- Stagebox reserves the right to call 999 in the event of an emergency whilst members are in Stagebox care.

Sign In / Sign Out Policy

- Members of UK high school (Year 3 to Year 11) must be dropped off and signed in by an adult over the age of 18 to be formally signed into the care of Stagebox staff.
- It is the responsibility of the parent/guardian to ensure that the Stagebox team are aware of any child protection concerns, requirements or court orders regarding their child. All disclosures are confidential and allow the team to appropriately care for and protect your child and others.
- Members of UK high school age (Year 12 and Year 13) may sign themselves in and out.
- If a member has not been collected within 20 minutes of sign out time and there has been no contact from the child's primary contact, the Stagebox team will attempt to contact the member's secondary contact to arrange for them to be collected. If a member has not been collected within an hour of sign out time, the Stagebox team will revert to our child protection policy to ensure the safety of the member and will notify the relevant authorities to seek further guidance.